



**DuraShutter**  
MADE IN NEW ZEALAND

**AceDoors**



**DuraShutter has been  
created as the ultimate  
design solution –  
exceeding New Zealand’s  
harshest recorded  
weather conditions.**

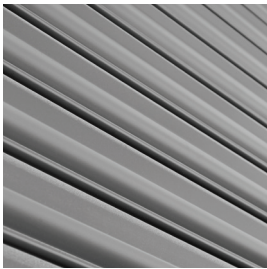


**DuraShutter – tested to meet and exceed the wind load requirements of AS/NZS 4505:2012 and the updated requirements of AS/NZS 1170.2 amd. 4 in sizes up to 8 metres wide.**

*PATENT PENDING*

# DuraShutter

- Tested at AceDoors own purpose-built, wind load testing facility, DuraShutter was subjected to wind loads equivalent to category three and four cyclones, tested and passed at over 240 km/h.
- AceDoors are the first New Zealand Roller Shutter Manufacturer to design a door that meets and exceeds the wind load requirements of AS/NZS 4505:2012 and meets the updated requirements of AS/NZS 1170.2 amd. 4.
- DuraShutter has been designed to form part of the building and to withstand wind loads up to 2 kPa (Category 5 door) in its closed position.
- Custom-made to suit your project requirements.
- Manufacturing plants in Auckland and Christchurch.
- Designed and manufactured in New Zealand for commercial and industrial applications.



DuraShutters' galvanised steel curtain is made from individually roll formed interlocked 0.75mm slats. Available in galvanised or powder coated finish.



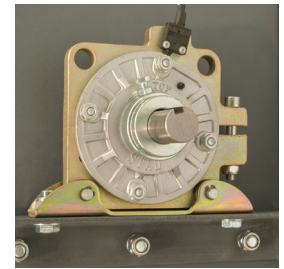
DuraShutters' unique guide and wind lock system offers a range of guides to meet specific applications including special silenced guides.



DuraShutter is available in widths up to 8m – larger widths by request.



Dual brake motor with auto engage handchain.



Inertia brakes fitted to all springless doors.

## Technical Data

<b>Applications</b>	For external and internal openings.
<b>Max Daylight Opening Sizes</b>	Standard up to 6.0m high x 8.0m wide. Larger sizes available.
<b>Curtain</b>	Constructed from individually roll formed interlocked slats. Slats from 0.75mm thick galvanised steel. Galvanised or powder coated finish.
<b>Guides</b>	A selection of door guides available.
<b>Operation</b>	Manual or automated options. External key switch and electric eye safety beams available. 3 or single phase 0.5hp or 1hp motors. Emergency manual operation.
<b>Bottom Bar</b>	Heavy duty extruded aluminium bottom bar with rubber weather seal.
<b>Controls</b>	Controlled by push button or key switch.



Manufactured by AceDoors

**Auckland:** 43a Hobbill Avenue, Wiri, Auckland P 0800 DOORS5  
**Christchurch:** 57 West Coast Road, Yaldhurst, Christchurch P 0800 DOORS1  
PO: PO Box: 76-105, Manukau, Auckland 2241, New Zealand W [www.acedoors.co.nz](http://www.acedoors.co.nz)

**AceDoors - over 25 years manufacturing experience. 24/7 repair service.**

**DuraShutter**